

# Society for Range Management Pacific Northwest Section

Properly functioning ecosystems provide for long-term sustainability of watersheds, plants, animals and people  
Volume 57, Number 2 April 2006

## President's Message

Bob Drinkwater, Prince George, BC

Well, we did it! We put on one spectacular meeting in Vancouver. I was reading "Thoughts from Vancouver" in the spring edition of the Nevada newsletter. We aren't the only ones blowing our horns about how great the meeting was. See some Nevada comments below.

So what's after Vancouver? There were house-keeping chores like writing thank-you notes and reports. Given all the help and support that the Texans offered, we also need to make ourselves available to assist the Nevada Section. There is momentum coming out of Vancouver to capitalize on as well. I was particularly impressed with the High School Youth Forum (HSYF). PNW had 3 excellent students at the HSYF; we should build on that. Those of you who attended the HSYF sessions know what I am talking about. Thanks to the members who organized this for PNW. We must be sure that we have a well-organized contingent at Nevada in 2007.

The HSYF will be on the agenda at this summer's field workshop at the Eastern Oregon Agriculture Research Center, out of Burns. **Joe**

**Wagner** is working with the local committee chaired by **Darren Brumback, Tony Svejcar** and **Jeff Rose** to set up this meeting. It will be a great workshop and I look forward to seeing many of you there.

Things might seem a little quiet after Vancouver 2006, but I know a lot of members got a good recharge of enthusiasm in SRM as a result of "Rangelands to Rainforests". It will be nice to carry that enthusiasm forward to our Section meetings and to Nevada in '07.

I thank all the members who took time out of their busy lives to help put on such a spectacular meeting. John Buckhouse and Bob France did an admirable job in leading us; the dedication and effort of many is what made the meeting such a success.

Bob Drinkwater,  
President, PNW Section, SRM

See you in Burns  
in July!

NEWSLETTER



### Kudos from Nevada

*"The Vancouver Conference was well organized with top-notch facilities. I particularly enjoyed meeting and visiting with folks from British Columbia. They have many of the same issues and concerns that we have in the US Government, which was surprising to me. . . . I have to say the people from Vancouver are some of the friendliest folks. . . I'm glad I made the trip and didn't let the lack of budgetary support rain on my parade. It was worth it."* Shirley Johnson

*"I came away from another annual SRM meeting renewed, excited and physically exhausted. It is possible for me to get more accomplished as an advocate for NV rangeland livestock production in one week at an annual SRM meeting than in the rest of the year at home. The contacts, ideas, science and discussions, both with new folks and the usual suspects, are enjoyable, thought provoking, and I feel, highly productive. This is a great organization made up of highly diverse people, backgrounds, agendas, passions, likes and dislikes. It is worth every penny for my membership dues and time input - I get tenfold back and in turn, hopefully the people I represent and who pay my freight on a daily basis get the same."* Gary McCuin



## Wrapping up Vancouver '06

If you weren't in Vancouver, read on for a few highlights and kudos. If you were there, enjoy a moment to reflect and refresh! **59<sup>th</sup> Annual Meeting?** Fantastic! As **Rex Cleary**, Nevada, said, "(it) was run with precision, good organization and creativity". **Plenary?** Awesome – thank you **Klaas Boersma** for securing Her Honor to visit us. **Weather?** Starry nights and sunny days. **Hotels?** Great – and within a 2-minute sprint of one another. **Traffic?** Fast. **Food?** Excellent -- with an easy walk, you could eat anything from hamburger to sushi. **Street people?** Some tragic, others savvy. The latter quickly figured out who we were and adjusted their spiel accordingly. **Fellow SRM'ers from the world?** Incredible! And in the words of former PNW member, **Chan Glidewell**, now editor of the Oklahoma newsletter: "... any time our Canadian friends have a hand in planning a meeting or tour, it will be entertaining! This meeting was no exception."

How did it happen? General co-Chairs **John Buckhouse** and **Bob France**, describe it well:

*About 5 years ago, PNW Section submitted a bid to host the 59<sup>th</sup> Annual Meeting for the Society for Range Management at Vancouver, BC. We entered into this agreement in the spirit of obligation (it was after all, our turn) and love (we have a beautiful Section – both in scenery and members, and wished to share that with the Parent Society).*

*What a ride it has been! Over the past several years, about 25 people have met regularly at face-to-face and conference call meetings to provide a base of superb planning*



*and communication. Other volunteers came together for the "many hands make light work" of stuffing bags, setting up, greeting, hosting, and running!! Over 150 PNW folks made this whole thing work.*

*How did it work? BEAUTIFULLY! Add the Colorado SRM office, the courteous professional staff from the hotels, Tourism Vancouver plus many tour sites and businesses, lovely facilities, glorious weather – and **16 countries represented by 1211 people** (a new record for a meeting held outside the US). It could not have worked better!*

*The Plenary, awards session, and banquets were exquisite – with agendas which future planning committees would do well to copy! The informational sessions were absolutely on schedule! Oral paper presenters and poster presenters numbered about 125 each. Thirty symposia were given! A well run off-site Web Page and on-site Session Operations office put this meeting clearly into the 21<sup>st</sup> Century, with all of the programs on backed-up power-point, while simultaneously providing a 'nerve center' to the entire meeting! Entertainment and music (with our own **Rob Dinwoodie** and **Tim Ross**) were superb. The crowds, student and regular members seemed to love it all. Each of us received more than a few compliments on the Section and our organization. And, we had fun! A member of the Reno Planning Committee, after walking past one of our 7 a.m. daily planning sessions, commented that "something must be wrong with the PNW people . . . they are in their daily briefing and they are laughing!"*

*Our celebratory party was an especially fine conclusion. We all were touched when **Bob Drinkwater** and **Kevin Guinn** presented the **2005 Trail Boss Award** to **Don Blumenauer**. Don, strong man that he is, was quiet and emotional as he accepted the praise and love which was showered upon him. What a fine way for the Pacific Northwest Section – which had worked hard, put on a magnificent show, and demonstrated its care and concern not only for rangelands, but also for each other – to close the 59<sup>th</sup> Annual Meeting of the Society for Range Management.*

*We appreciate all of you and thank you for being who you are.*

*Fondly, **Bob and John***

# Vancouver '06 Plenary Session

By **Chuck Perry**, consultant for sustainable rangeland management, who notes, “Rangeland resource values seem finally to be widely recognized, and improved management implementation more common. Rangeland issues, research, & conflicts present challenges. Continued learning must be a high priority.”

Usually Plenary Sessions are attended by habit, with little anticipation. Why would this one be different? We were caught off-guard! It proved to be one of the best, with solid and thoughtful organization, presentation and a good selection of speakers with local knowledge. As we entered the hall, large screens grabbed our attention; on them we saw historical pictures and maps of North America. For all of us, they set a tone of reflection.

**Hugh Barrett** had the honor, or at least the duty and responsibility, to moderate this opening Plenary session. He led the proceedings, and presented a strong lineup of knowledgeable speakers. Hugh first asked the very large crowd to remember SRM’s early years, and the individuals who had made large contributions to the Society and rangeland management, but had since passed on. After a moment of silence, Hugh’s recitation of their names brought back memories and deep feelings for many of our early leaders. All eyes did not stay dry.

The British Columbia Lieutenant Governor and Representative of the Queen, The Honorable Iona Camponala was introduced. Her entrance was grand, with bagpipes and formal Royal Canadian Mounted Police escort from door to podium. The Honorable Ms. Camponala is a small, slight, gray haired lady, with strong bearing. When she spoke, there was no doubt about her leadership ability or why she had her position. She commanded attention, spoke with authority, and displayed

an extensive knowledge of rangeland in North America and the world. She amazed the entire crowd by her authority and understanding of rangelands, their importance and management issues. We learned that she writes her own speeches and had done considerable research to prepare this talk. Her exit was with dignity and formal escort – an impressive start for our proceedings. The Honorable Iona Camponala was the plenary highlight.

To read her full speech, go to [http://www.ltgov.bc.ca/whatsnew/sp/sp\\_feb13\\_1\\_2006.htm](http://www.ltgov.bc.ca/whatsnew/sp/sp_feb13_1_2006.htm)

Dr. Wayne Choquette, an archeologist in the BC Kootenay Region, discussed archeology related to long-term weather cycles. Using work along the Rocky Mtns., he outlined how vegetation and wildlife occurrence advances and retreats relative to colder and warmer periods. Native peoples, dependent upon the natural environment, adjusted over time in order to survive these changes. This may have relevance to changes we see with the current warming trend.

Dr. Tom Pypker, Oregon State University, described precipitation’s fate when falling on various densities of tree canopy. When canopy intercepts rain-drops, more evaporation occurs and less reaches the ground to benefit lower growing plants. His examples might provide additional background for interpreting how semi-open juniper may affect under-story plants on some soil types. Tree water intercept may have an effect on ground water volume reaching streams.

James Honey of Sustainable Northwest, Portland, OR., positively described sound resource stewardship and defined sustainable land management. Thinking about and implementing this approach has many benefits for natural resources and in meeting farm and ranch managers’ objectives. Using a collaborative approach, local people can share information and experiences and address issues of sustainable land management under local conditions.

In the words of **Hugh Barrett**: “I am really happy with the way the Vancouver meeting went. There is no way to express the wonder and awe I feel for the people of the PNW Section – what an incredible bunch – the way everyone pulled at their oars, Wow!”

## John Tanaka is 59<sup>th</sup> President of Society for Range Management

By Tom Bedell of the Vancouver '06 Daily Trail Boss staff, and John Buckhouse

PNW Section member **John Tanaka** assumed the office of international President of the Society for Range Management during the 59<sup>th</sup> Annual SRM meeting. John, a long-standing SRM member, was raised in Ontario, OR (*ed. note: John, our high school English teacher could be on the SRM mailing list!* ☺). He attended OSU as a Rangeland Resources major, received his MS from U. of Arizona, and his PhD in Rangeland Economics from Utah State. He returned to OSU as a professor, then on to the Ag. Program in LaGrande. After several years with the US Forest Service, he returned to OSU and is currently with OSU's Eastern OR Agricultural Research Center in Union. John's wife **Ann** was Web Master for the Vancouver '06 Planning Committee. John, Ann and their 3 daughters are active in the local 4-H and high school sports communities.

President John will deal with several issues during his term: questions of university accreditation, membership numbers, finances, and communication to members and interested outsiders.

SRM's first president in 1948 was PNW's **Joe Pechanec**. Next from PNW were **E. William Anderson**, '62, **Dillard Gates**, '75, **Tom Bedell** '89, **John Buckhouse** '97, and now **John Tanaka**.

## Hip-hip-Hurray!!! PNW Members Recognized at Vancouver '06

**Will Hudson**, High School Youth Forum delegate from Goldendale, WA, elected by his peers to serve as their President, will conduct HSYF proceedings at Reno in 2007!

**Jimmie Hayes**, OSU senior from Enterprise, gave the 3<sup>rd</sup> place Student Conclave speech.

**Jennie Williams**, OSU senior also from Enterprise, won 5<sup>th</sup> place in the URME contest.

**SRM Honor Awards for Outstanding Achievement go to . . . Dr. Linda Hardesty**, WSU Range Management Specialist and Professor, for her teaching, research, extension, and international successes.

**Dr. Tony Svejcar**, ARS rangeland researcher and director of the Eastern Oregon Agriculture Experiment Station, for his research and rangeland administration career.



## PNW Trail Boss Award Goes to . . . Don Blumenauer

Don is one of the best known, most respected, and consistently loved members of PNW – and there is ALWAYS a twinkle in his eye. As a BC Agrologist and Range Extension Specialist for 34 years, Don was a true teacher. He is a rangeland manager, livestock planner, rangeland rehabilitator, weed control expert, & photographer! He knows how to build, log, and farm, too!

This was quietly said to Don recently, but it needs to be repeated for all to “hear”. “You have made my life and my profession better in many ways. What a wondrous thing it is to have a professional colleague who can provide strong academic and technical support and at the same time be a generous, fun, and delightful companion and friend! You have been an inspiration not only to me, but to so many others over the years. Thank God there are no signs of this stopping!”

## Vancouver Volunteers are the BEST!!

By Jim Dobrowolski, WSU, and Sandy Wyman, National Riparian Service Team, Prineville, OR.

We send out a great big “THANKS” to all of the folks who helped before and during the SRM meeting in Vancouver. We had changes at the last minute and ALL of you folks, with a big smile on your face, adapted with ease, jumped in and asked, “Where do you need help?” Many of you took on multiple jobs with a “Whatever you need me to do” attitude! A big thank-you to **Bob Gillaspay**, **Will Keller**, and **Dave Chamberlain** for showing folks what had to be done, how to do it, and where to go in the symposia and technical sessions. Your excellent direction made this appear effortless to the outside world!!

We were responsible for scheduling volunteers for the registration desk, room monitors for the technical sessions & symposia, security for the Trade Show and SRM business office, and changing room signs. We

were not turned down by anyone, and even those folks unable to attend the meeting were ready and willing to help with pre-meeting details!

We especially thank **Mike Borman** for appearing to be everywhere at once! You, Mike, made problems go away, and you even had time for a little dancing!! (*ed. note: an “award” possibility???*)

Hope to see all of you in Reno next year, where we can slow down, attend symposia and sessions, and do more networking, eh! We wonder if someone will do a dance for charity????



## PNW Students on the Move in Vancouver

By Clayton Bradley & Amber Greenall, Thompson Rivers University, Jennifer Williams, Oregon State University, and the Eastern Oregon University Team

Range Clubs from **Thompson Rivers U.** (formerly University College of the Cariboo), **Eastern Oregon U.** & **Oregon State U.**, after working diligently to raise the \$\$ to participate, were immersed in Vancouver activities. Each school had a booth in the Trade Show and students competed in the Undergraduate Range Management Exam (URME), plant ID, and speech contest. We spent many hours practicing as a team, running through practice questions, and furthering our knowledge about rangeland resources . . . and then spent more time studying. We attended technical sessions, Student Conclave events, and saw local sights. When we weren't writing tests we went

URME questions were tough. Here is a sample: Autecology is best defined as the study of the...

- structure, function and distribution of organisms
- interrelations between a species and its environment
- abiotic components of the environment
- competition among all organisms within a community

on a tour “showing how agriculture and wildlife interact in the urban interface. . . on what is some of the most fertile land on the Fraser River Delta. . . modern greenhouse, dairy, and

other farms that have the difficult task of managing agriculture and wildlife. . .” In preparing for the events, we had counsel: **Craig Carr**, PhD student at OSU, **Darren Bruhjell**, “our (TRU) resident plant expert”, and **Mike McInnis**, EOU professor.

Our graduating members look forward to an active role in the management of rangelands. We all will see you in Reno in 2007. Thank you, PNW Section, for support and encouragement.

## High School Youth Forum in Vancouver

Overheard as the HSYF was coming to a close: “Do we have everyone’s address? Remember we are all getting together in Montana in five years!” Then, spotting us, they said, “Oh, have you seen Marcy do the Worm? Marcy, show them.” And with that, a tall lithe girl fell to the floor on her tummy and undulated backward rapidly down the floor in inch-worm fashion. Astounding!! Clearly, in four fast-paced days, 26 high school youth, representing 13 Sections, had come together, competed in their speech contest, and become fast friends. PNW Section was well represented by **Jim Albietz**, BC, **Cheyenne Ward**, OR, and **Will Hudson**, WA. This trio whole-heartedly says, “THANK YOU to the PNW Section for this great opportunity”.

**Cheyenne** wrote: “Meeting kids my age that have the same interests and life as I do was a highlight. It was refreshing to see that I am not the only one my age that gives a care about ranching and agriculture. I have many lasting friendships. The most interesting site on our tour had to be the 17-acre greenhouse. In one urban expansion session we



took sides to see how the developers, citizens, farmers and city council worked together. This whole experience opened my eyes to other viewpoints and possible solutions for current issues that face us every day.”

**Will** wrote: “I would definitely do HSYF again. The friendships and people that you get to meet are very interesting and overall it is a memorable experience. I have kept in contact with these new friends and it seems that I get along with all of them because we all shared the same beliefs and had pretty much the same backgrounds. This is why I wanted to become the HSYF President, so that I could go back next year to get to do the experience all over again!”



**PNW Display Board** is for YOU to use. Contact Fred Hall:  
[Fred\\_C\\_Hall@plantecolnw.com](mailto:Fred_C_Hall@plantecolnw.com)

## Welcome New Members to PNW Section

What an exciting time to come on board as a PNW Section member of SRM. Hats off to all the folks who introduced these folks to SRM, too! **Wendy Gardner** outdid herself. Thanks, Wendy!

Jim Albietz, Lillooet, BC

Scott Barr, Colville, WA

Clayton Bradley, Kamloops, BC

Wayne Choquette, Yahk, BC

Lila DeLury, Burns Lake, BC

Mark Dyer, Tualatin, OR

Marcella Egger, La Grande, OR

Brett Emmert, Walla Walla, WA

Mark Estes, Estacada, OR

Greg Finstad, Fairbanks, AK

Percy Folkard, Kamloops, BC

John George, Evans, WA

Amber Greenall, 100 Mile House, BC

Nicholas Hamilton, Coldstream, BC

Will Hudson, Goldendale, WA

Claudia Ingham, Hillsboro, OR

Kyle Jackson, Prairie City, OR

Michael Keefer, Cranbrook, BC

Jodie Kekula, Cranbrook, BC

Reid Kelly, Philomath, OR

Ryan Leary, Corvallis, OR

James Manuel, Kamloops, BC

Casey O'Conner, Hines, OR

Catherine Parks, Cove, OR

Robin Routledge, Kamloops, BC

Cody Sheehy, Corvallis, OR

Darrell Smith, Invermere, BC

Edi Torrans, Kamloops, BC

Stephen Van Vleet, Colfax, WA

Lydia Wahls, La Grande, OR

Cheyenne Ward, Pilot Rock, OR

Chris Wellman, Vernon, BC

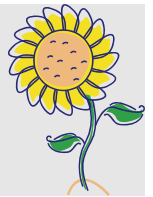
Chelsey Wheelhouse, LaGrande, OR

Jennifer Wiseman, Corvallis, OR

Sam Wyffels, Joseph, OR



# PNW Chapters Spring to Action



## British Columbia Chapter

The British Columbia Chapter of SRM presented its '05 Rangeland Manager of the Year Award to rancher **John Solecki** of Tatal Rose. The ranch, purchased in 1998 by John & Cya Solecki, had not been operational for several years. Numerous repairs were needed to get it up and running. A few of the major projects accomplished by the Solecki family include: 1. boundary fencing; 2. re-establishment and fencing of hayfields; 3. installation of a center pivot; 4. receipt of a Woodlot License; 5. expanded watering stations in the feedlot; 6. herd expansion from 100 to 350+. The Solecki family has upgraded the operation to one which has reduced labour costs plus a well-managed forage base. The BC Chapter salutes John & Cya Solecki for their outstanding rangeland management strategies. **Bob Fowler**, BC. Chapter 1<sup>st</sup> Vice.pres.



Bob Fowler, left, presenting the award to John Solecki.

## Washington Chapter

Washington Chapter members will head to the field on May 19 to see Devon Michel's rangeland seeding projects. He has been seeding some range ground a few years, and has had success. He doesn't summer fallow, and although the ground is rocky, he discs it in late fall and then seeds. Meet at the Othello Wal-Mart parking lot at noon, then car pool to Devon's. Wal-Mart is on the main road into Othello and about a mile off Hwy. 17. The Chapter would like to do more "informal" field tours, so if you've an idea, share it! **Richard Fleenor**, Ephrata

## Southern Oregon Chapter

The Southern Oregon Chapter hosted George Gruell, retired Forest Service Research Wildlife Biologist with his collection of re-take photos of over 500 historical photographs. Joe Wagner has promised an article on this 2-day presentation (March 29&30) for the next newsletter. SOChapter is assisting OSU Extension and the USFS in presenting the Range School from Colorado State U, May 8-9 in John Day and May 11-12 in Lakeview. Producers and agency people are urged to attend. Information: **Pete Schreder**, [pete.schreder@oregonstate.edu](mailto:pete.schreder@oregonstate.edu) **Les Booth**, Lakeview

## PNW Annual Meeting & Field Workshop

Sept. 14-16  
Mt. St. Helens, WA

We know Mt. St. Helens erupted May 18, 1980, but what has happened the last 26 years in terms of plant succession, soil development, wildlife, forest growth, . . . ? The speakers and all-day field workshop will feature plant ecology and geology.

Committees will meet the afternoon of the 14<sup>th</sup>; the program will kick-off at 5:00 p.m.

The 16<sup>th</sup> is open for you to explore Mt. St. Helens on your own. However, there could be a climb on the mountain; a permit can be reserved for up to 12 people. The climb is non-technical, but is approximately a 6-hour slog. No couch potatoes, please! More information with full details in the next newsletter, but mark your calendar now!

**Kevin Guinn**, Ephrata 509-754-3023

## Chapter Presidents

Vic Wright, British Columbia  
250-558-1787

Richard Fleenor, Washington  
509-754-3023 x102

John Swanson, Central Oregon  
541-416-6726

Les Boothe, Southern Oregon  
541-947-6141

OSU?  
Eastern Oregon?  
Portland?



## Upcoming Events

July 12 - 14, 2006

Sept. 14 - 16, 2006

February 11 - 16, 2007

Summer 2007

Fall 2007

January 26 - Feb. 1, 2008

PNW Section Summer Field Workshop, Burns OR

PNW Section Fall Workshop & Annual Meeting, Mt. St. Helens, WA

SRM International Meeting, Reno, Nevada — *Managed Rangelands: Traditions and Transitions*

PNW Section Field Workshop, British Columbia

PNW Section Annual Meeting & Workshop, Corvallis, OR

SRM International Meeting, Louisville, Kentucky — *Building Bridges: Grasslands to Rangelands*

*Pacific Northwest Section, Society for Range Management — Caring for basic range resources: soil, plants and water*

Want to alert members to an upcoming event? Comment on an article? Give us your new address? Brag about another member's contribution to range management? Tell us a story? Contact the Newsletter Editors! [jlbreese@prinetime.net](mailto:jlbreese@prinetime.net) or [Teal\\_Purrington@or.blm.gov](mailto:Teal_Purrington@or.blm.gov)

Permit #24

97754

PRINEVILLE, OR

PAID

ORGANIZATION

NON PROFIT

ADDRESS SERVICE REQUESTED

PNW Section of SRM  
Newsletter Editor  
C/O John & Lynne Breese  
3315 SE Paulina Highway  
Prineville, OR 97754